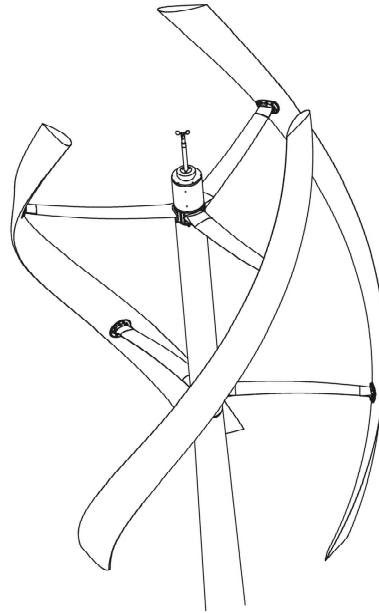


LIGHT WIND

BOLD PERFORMANCE





A mix of high green technology, *Made in Italy* design and high scientific artisanal work.

We started with the dedication to build the most beautiful wind turbine in the market.

Now, we provide our clients the **best performing wind turbine at light winds.**

WIND IS OUR CHALLENGE



≈5.500 kWh with at least 2 months of strong wind in a year

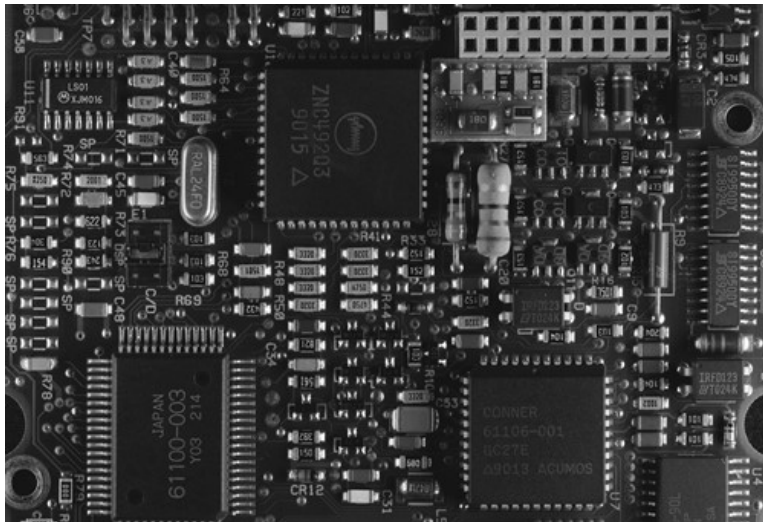
LIGHT WIND IS OUR BUSINESS



≈1.500 kWh in a year with light winds

STRENGTHS

UNIQUE INNOVATION MILESTONES



4 Sensors & 2 Brakes

- Remotely controlled by the APP
- Quiet: only 38 dBA at full capacity

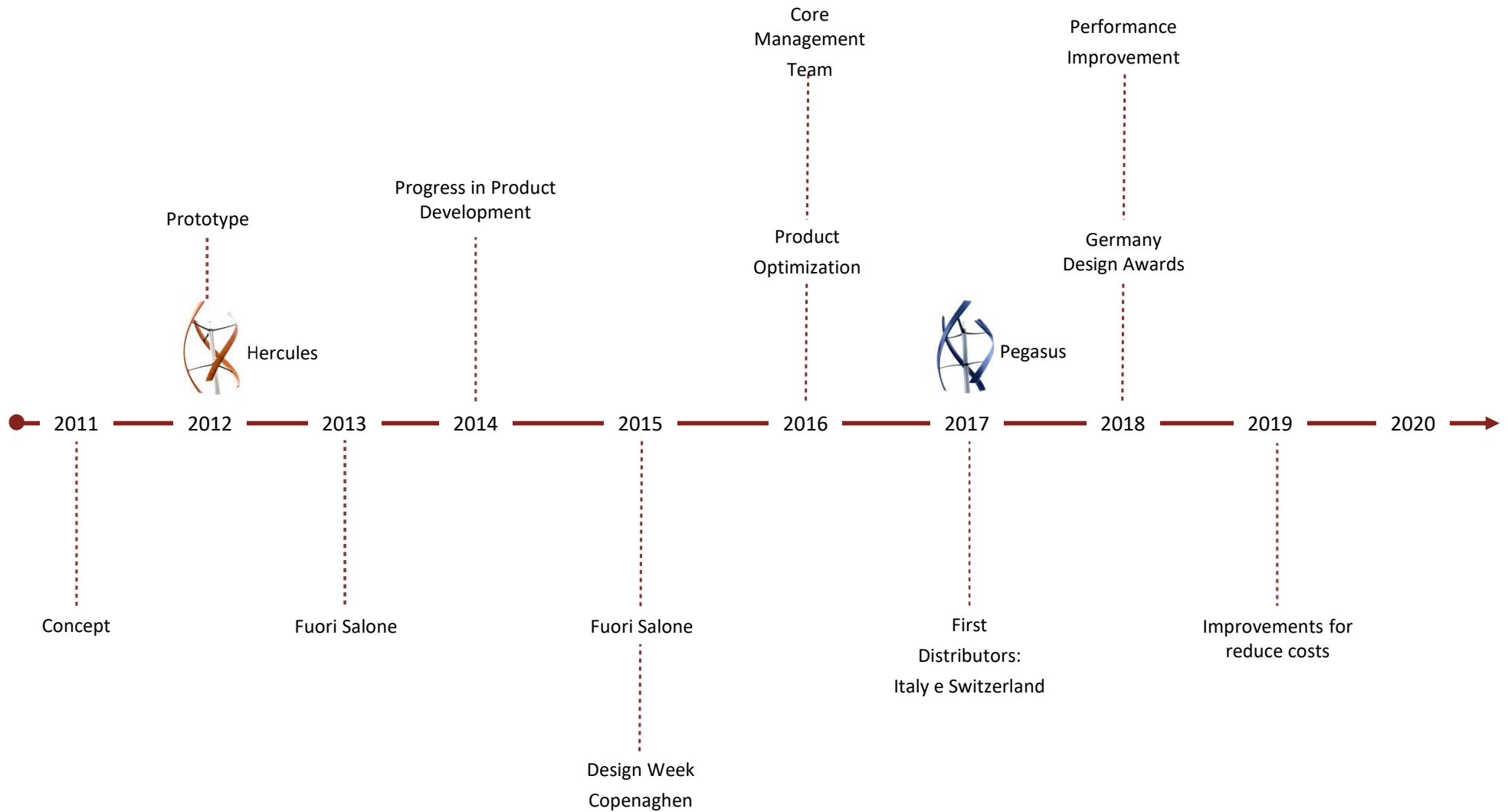
INITIAL ARTIFICIAL INTELLIGENCE



3 Speeds

- VIVACE with 200 RpM
- ALLEGRO with 150 RpM
- ADAGIO with 80 RpM

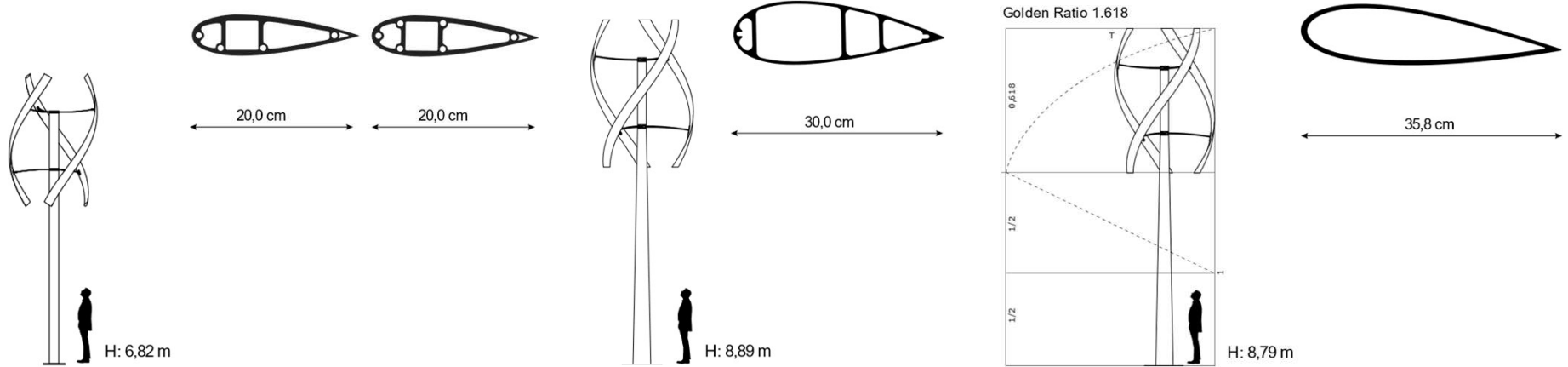
MILESTONES



TECH MILESTONES

DIMENSIONS

WOOD



2011

2016

2017



Mélèze



Aucoumea
klaineana
(Gabun Wood)



North-American
Cedar



Paulownia
Kiri

TECH MILESTONES

CONTROL

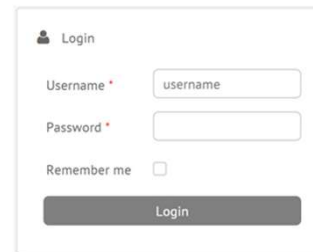
SOFTWARE



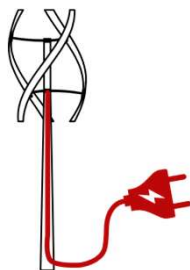
Screen & Buttons



Touch Screen



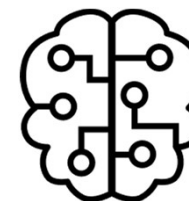
WEB



Direct Control
Passive



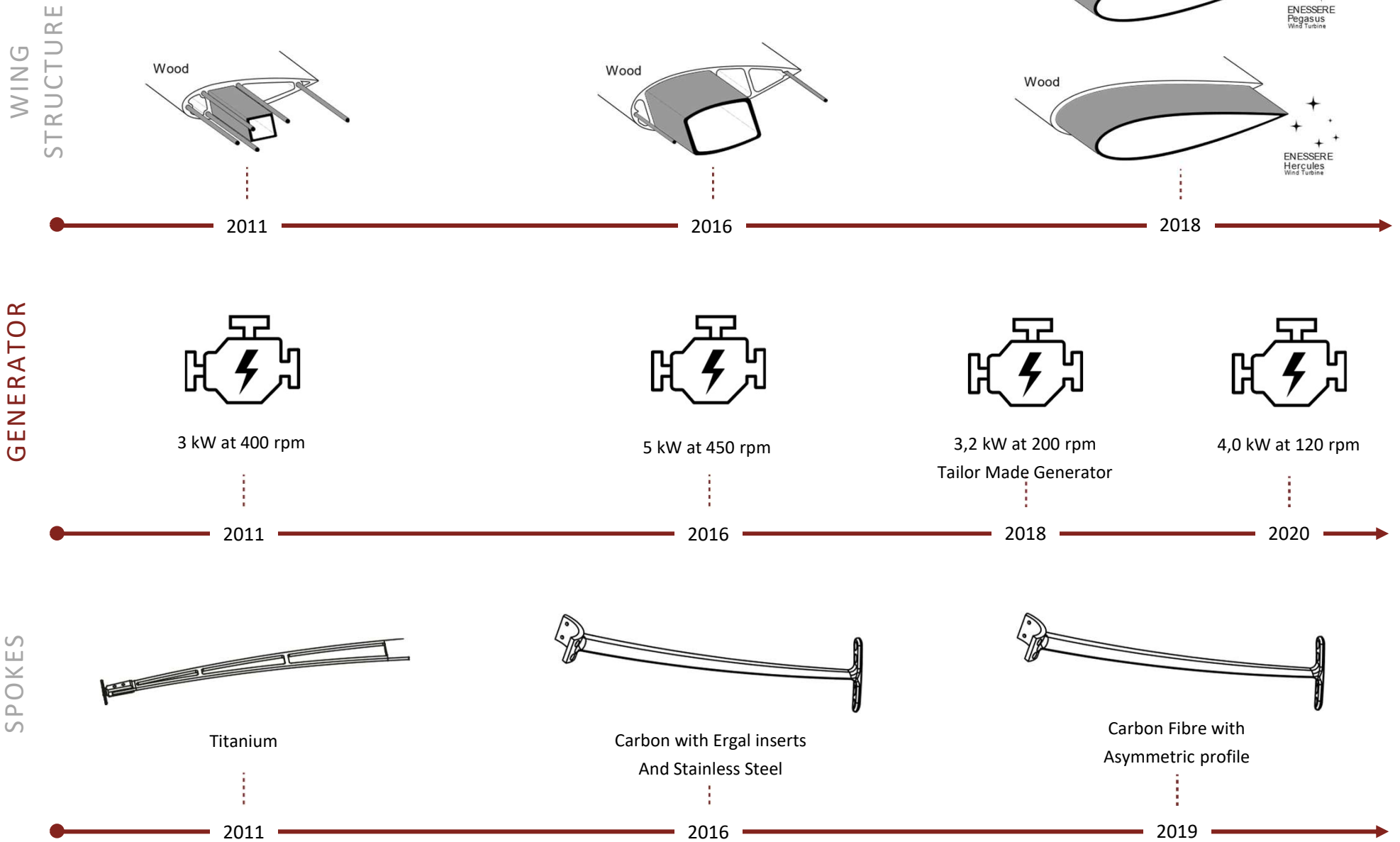
Active Control



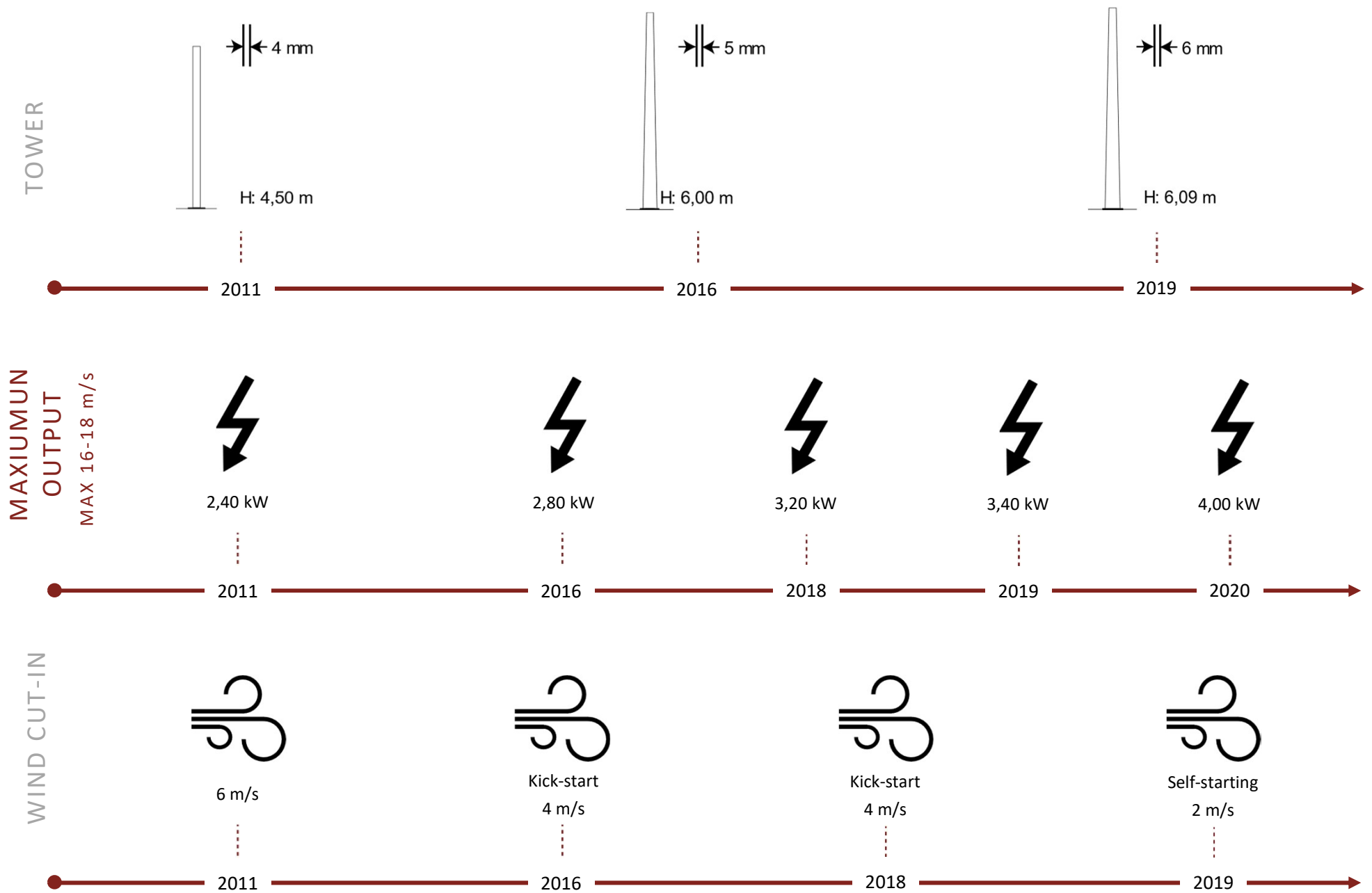
Initial A.I.
Artificial Intelligence



TECH IMPROVEMENTS

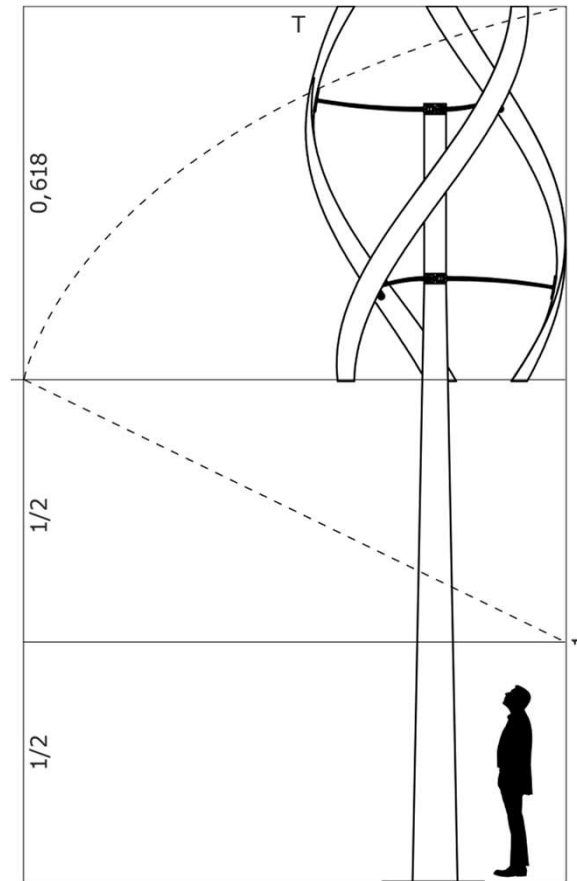


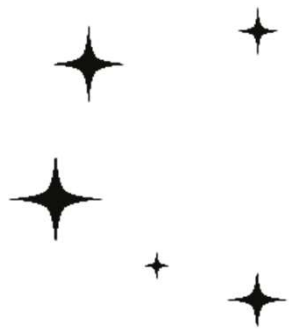
TECH IMPROVEMENTS



TWO PRODUCTS

HERCULES & PEGASUS





ENESSERE
Hercules
Wind Turbine

Our flagship product. It perfectly integrates the environment it's installed in enhancing its architectural and landscaping value.

General Information

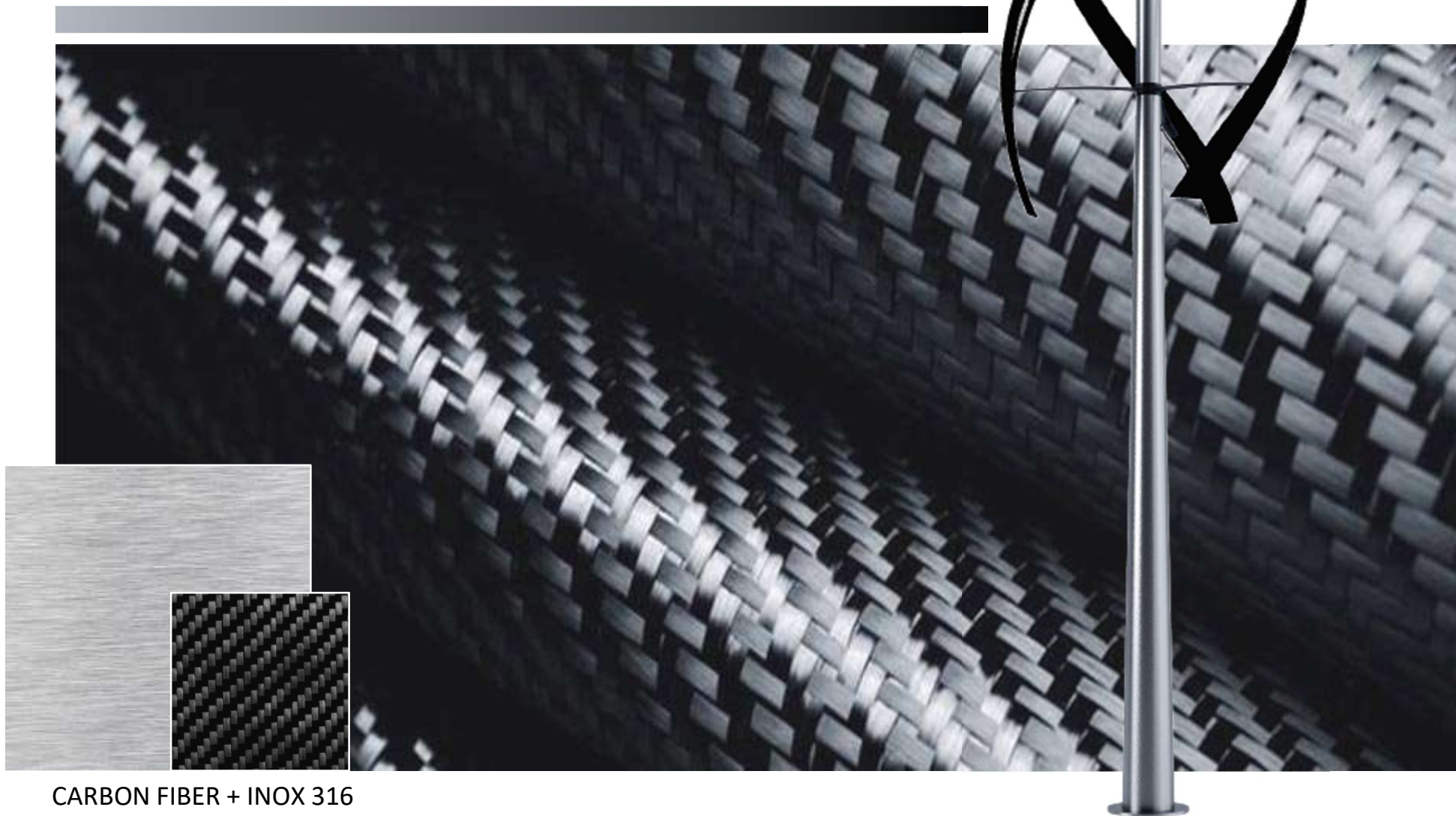
Axis	Vertical
Total Height	8,85 m
Tower Height	6,00 m
Rotor Width	2,68 m
Wing Height	3,76 m
Total Weight	690 kg
Wing Structure Material	Carbon Fiber
Wing Covering Material	Paulownia Wood
Tower Material	Stainless Steel 316
Connecting Strut Material	Carbon Fiber

HERCULES Natural



PAULOWNIA + INOX 316

HERCULES Tech



CARBON FIBER + INOX 316



A wind turbine that
synthesizes
environment &
harmony, elegant
design &
customizable
solutions

General Information

Axis	Vertical
Total Height	8,85 m
Tower Height	6,00 m
Rotor Width	2,68 m
Wing Height	3,76 m
Total Weight	660 kg
Wing Structure Material	Carbon Fiber
Wing Covering Material	Varnish
Tower Material	Steel S355N
Connecting Strut Material	Carbon Fiber

PEGASUS A3



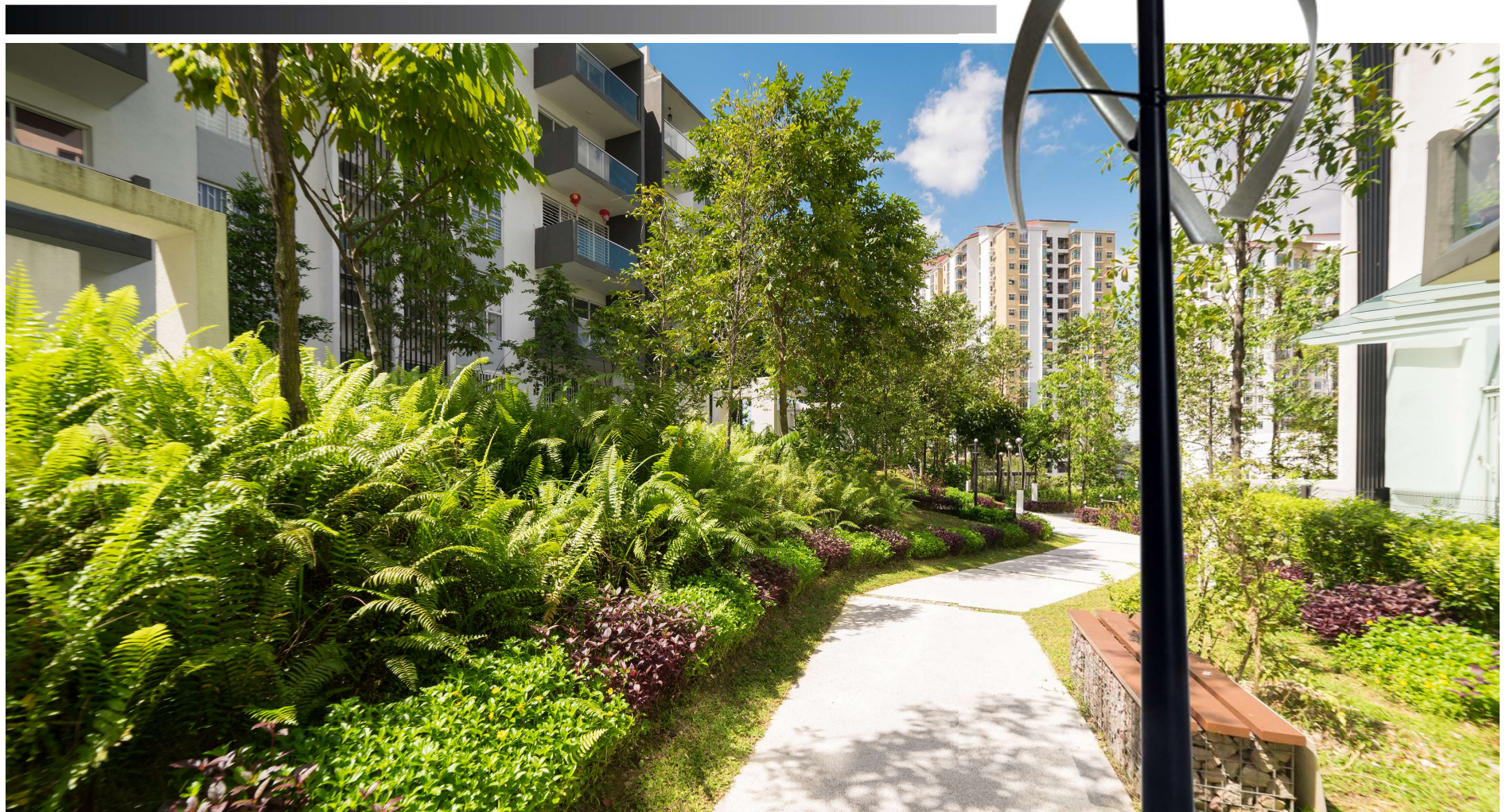
SILK + TITANIUM

PEGASUS B1



SKY + GRAPHITE

PEGASUS C1



METAL + GRAPHITE

PEGASUS D1



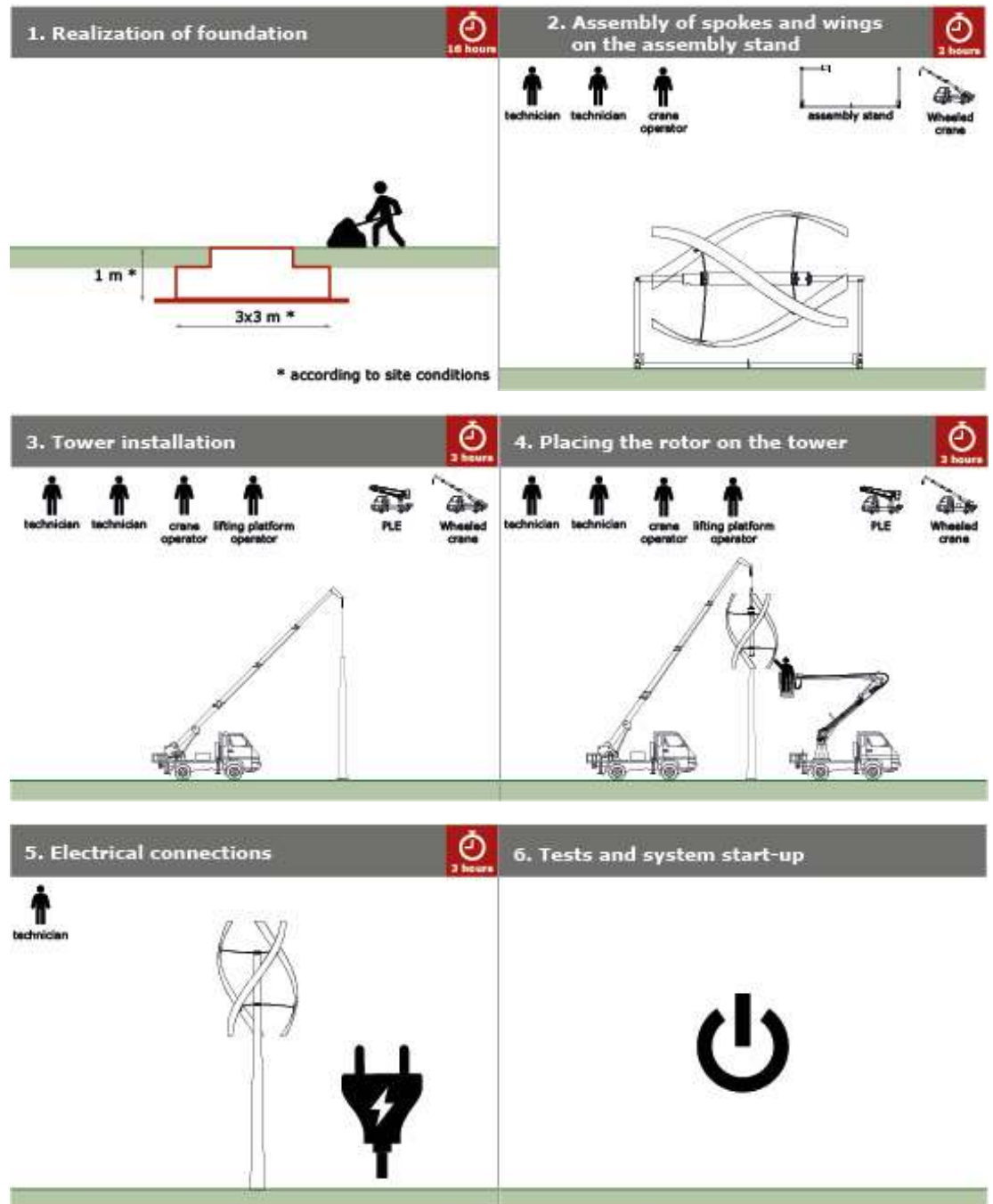
COPPER + GRAPHITE

PEGASUS E3



SPACE + METAL

INSTALLATION TIME



MANUTENZIONE



Spokes, wings and tower cleaning



Visual inspection and control of
wings, spokes, electrical panel.
Hydraulic system and tightening
of various nuts and bolts.



On-site anti-aging treatment






UPS Replace



Revision of the rotor, brake,
bearing and hydraulic system



Repeat all the annual/three-year
maintenance operations

	ANNUAL	THREE-YEAR	AFTER 27.000 H OF ROTATION / 6 YEAR
			
EMPLOYEES	2	2	2
DURATION	8h	16h	24h
VEHICLES	PLE	PLE	Wheeled Crane + PLE

Who recently chose us:



Philip Morris SA | Neuchatel, Switzerland



Vannucci Nursery Park | Pistoia, Italy



Kering Eyewear Headquarters | Padova, Italy



Soleol SA Headquarters | Estavayer-le-Lac, Switzerland

Who recently chose us:



Esselunga S.p.a. | Milan, Italy



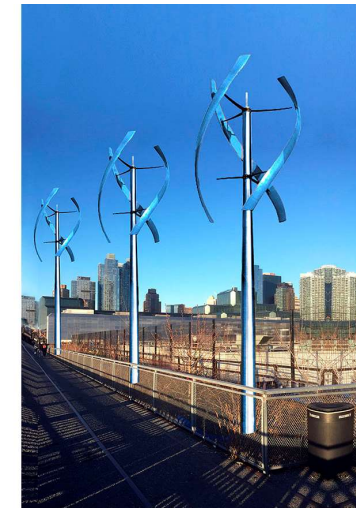
Green Pea | Torino, Italy

PEGASUS ROSSO



METALLO + ROSSO

COOP Firenze | Firenze, Italy



Hudson Hight Line | New York, U.S.A.



AND,
IT'S BEAUTIFUL.

ENESSERE S.r.l.
Via dell'Impresa, 9
36040 Brendola (VI) - Italy
P.iva/VAT n.: IT04112250248

CONTACTS
T. +39 0444 401001
info@enessere.com
www.enessere.com

